



Thank you for choosing the 1600 Lumen Trionic LED Front Light with Battery Pack.

This manual both shows how you attach the light holder and the light on a Walker (left column below) and also how you attach them on a Veloped (right column below).

In the left-hand photo, **A** shows the holder attachment parts for a Walker (2 screws + 2 washers). **B** shows the holder attachment parts for a Veloped (1 screw + 1 knurled nut + 1 nut).

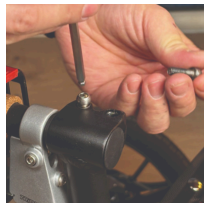


Attaching the Light Holder

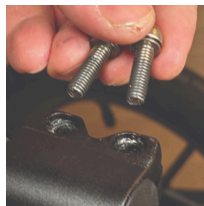
Instructions for a Walker



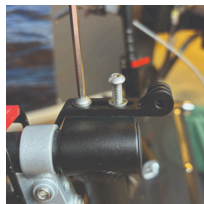
A1. On top of the black semi-vertical tube, locate the two screws that clamp the grip tube, situated in front of the brake lever.



A2. Loosen both screws with the 5mm allen key included with the LED light.



A3. Remove the two screws from the grip clamp.



A4. Place the light holder on top of the grip clamp, with its circular and slotted light attachment pointing forwards and upwards. Enter the two screws with washers into the holes of the clamp.

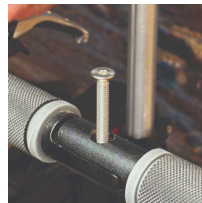


A5. Tighten the two screws with the 5mm allen key. NOTE: It is important that you tighten the screws properly as they secure the grip tube with its rubber grip and brake lever.

Instructions for a Veloped



B1. Locate the screw at the center folding hinge of the U-shaped grip bar of the Veloped. Unscrew the screw with the included 4mm allen key and remove it.



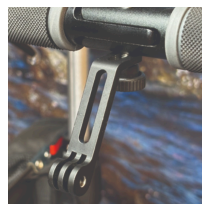
B2. Replace the old screw with the longer screw included with the LED light. Attach the longer screw to the hinge and tighten it with the 4mm allen key.



B3. Attach the short angled end of the light holder to the lower end of the screw, on the downside of the grip bar. Fasten the holder with one washer and the knurled nut.



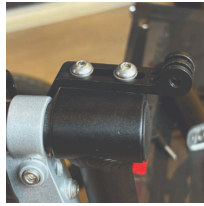
B4. For a more secure holder attachment, avoiding the holder to unintentionally turn sideways, replace the knurled nut with the included stainless steel nut and tighten it with a 10mm spanner.



B5. This photo shows the light holder as correctly attached.

Attaching the LED Light to the Holder

Instructions for a Walker



A6. Identify the circular front end of the light holder, with two slots for attaching the light.



A7. Push the slotted bracket of the light into the slots of the holder and make sure they are aligned. Seen in the traveling direction of the Walker, enter the included wingnut from the left and tighten it.

Instructions for a Veloped



B6. Locate the screw at the center folding hinge of the U-shaped grip bar of the Veloped. Unscrew the screw with the included 4mm allen key and remove it.



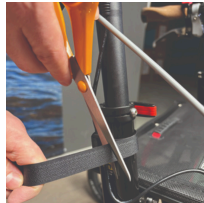
B7. Identify the circular front end of the light holder, with two slots for attaching the light.

Placing the Battery Pack

Instructions for a Walker



A8. Run the longer extension cable along the semi-vertical grip tube of the Walker and secure it with the included velcro strap.



A9. You can cut the excessive length of the velcro strap with a pair of scissors.



A10. Place the battery pack in the rear zippered pocket of the basket.

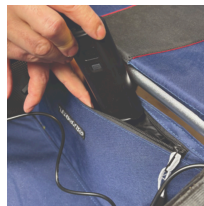
Instructions for a Veloped



B8. Run the longer extension cable along the U-shaped grip bar of the Veloped and secure it with the included velcro strap.

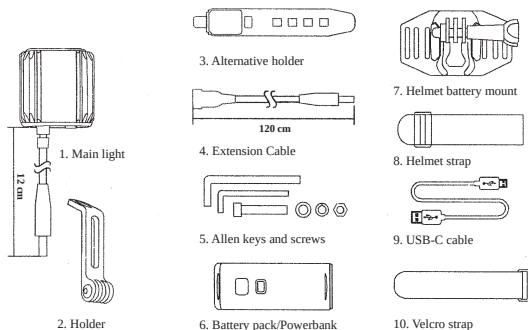


B9. You can cut the excessive length of the velcro strap with a pair of scissors.

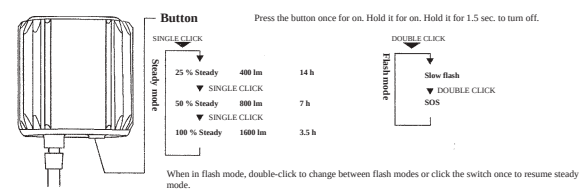


B10. Place the battery pack in the rear zippered pocket of the basket.

The package contains



How to operate the light



Attention: The light is specially designed for working with voltages ranging between 5V-12 V DC. When the input is below 6.5 V the power indicator on the light will shift to red. This means that the battery is low and needs to be recharged.

